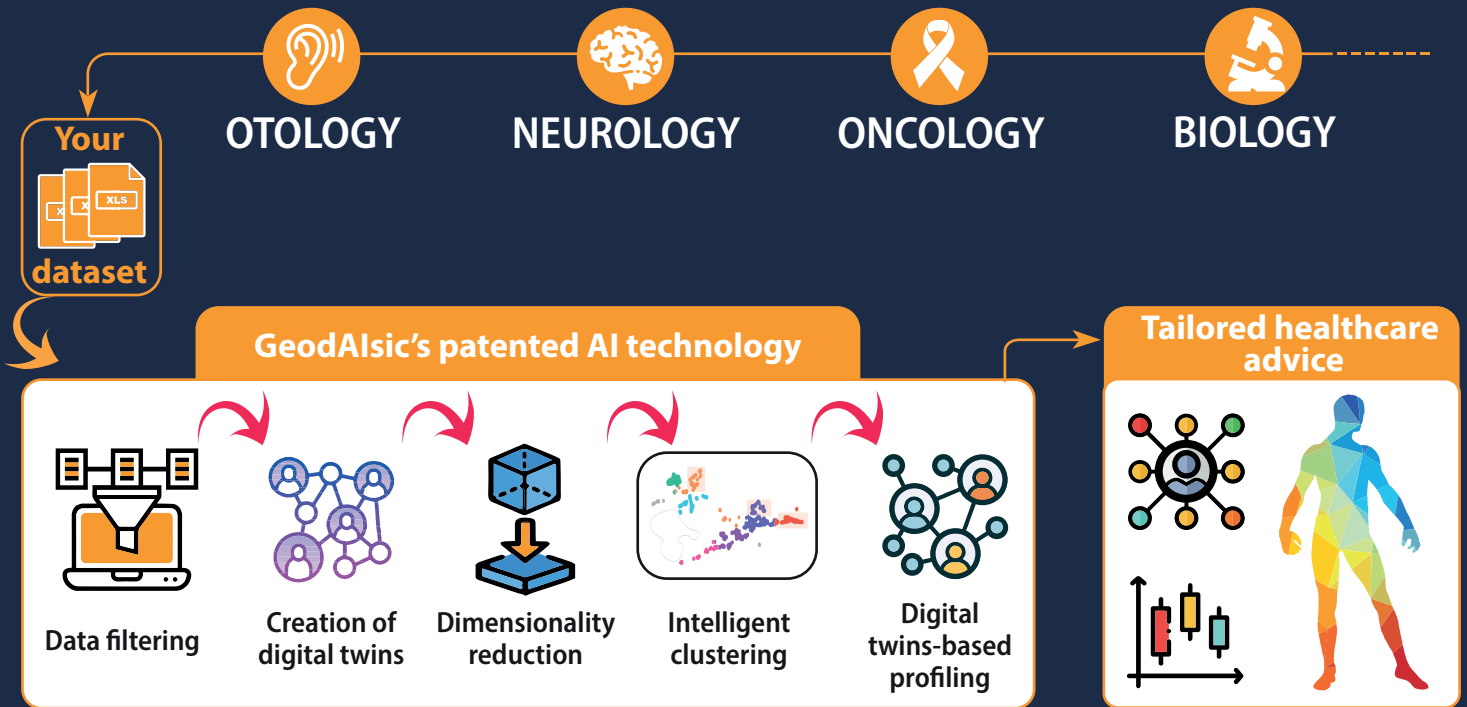




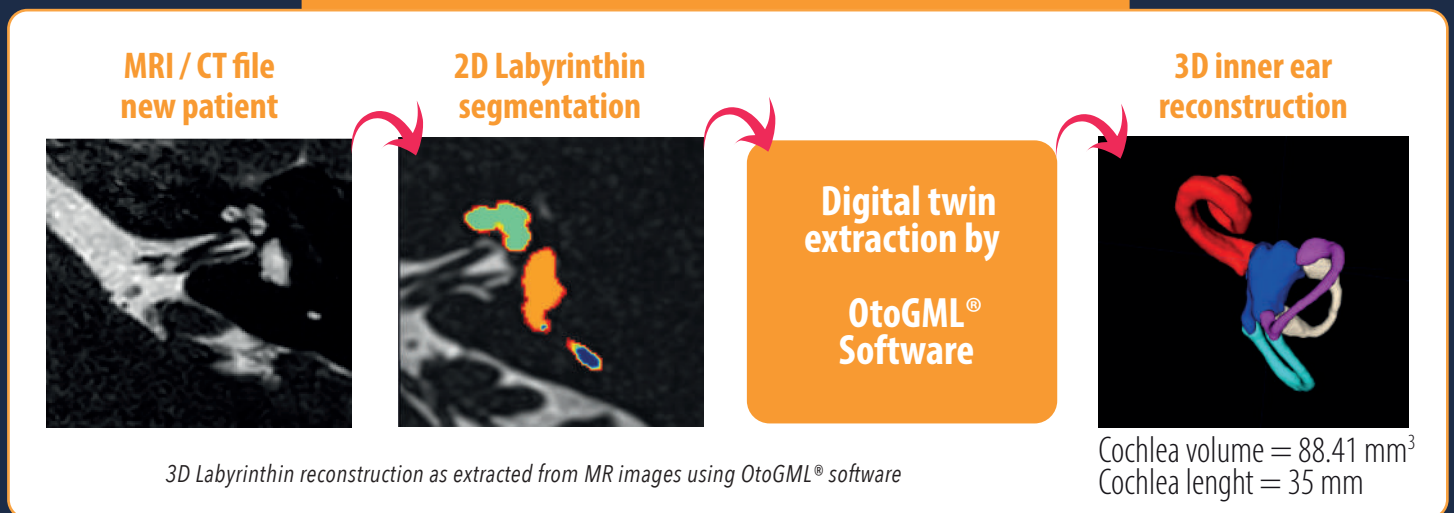
# GeodAlsics

## AI-powered Clinical Decision Support Systems

- 2 patents
- 4 proprietary software
- 6 scientific publications
- Innovative solutions since 2021
- Available & customizable AI blocks
- ISO 13485 & ISO/IEC 42001 compliant



### OtoGML<sup>®</sup> application : Inner ear morphometry

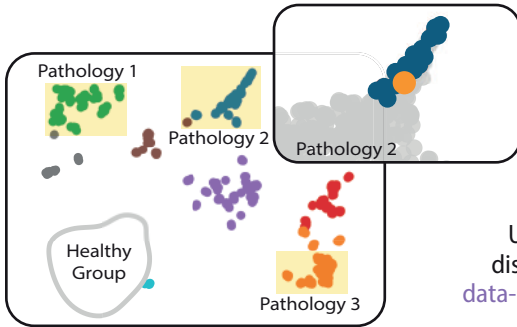


## What we can do for you

- Enhancing surgery act
- Follow-up therapy
- Early detection of pathologies
- Patient selection for clinical trials and gene therapy

## OtoGML® for clinical decision

Model trained  
Population mapped  
Ready for new patients

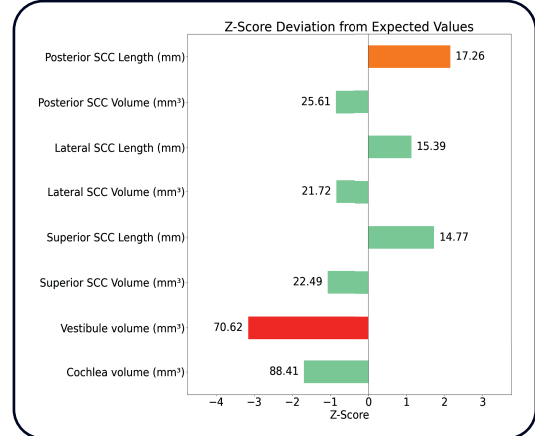


Patient  
Localization &  
Z-score deviation

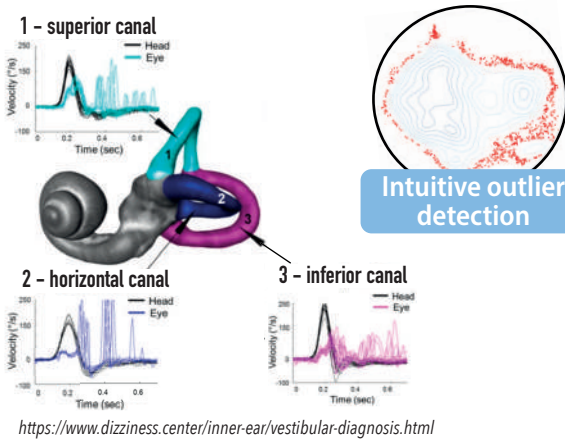


Unsupervised  
disease mapping  
data-based diagnostics

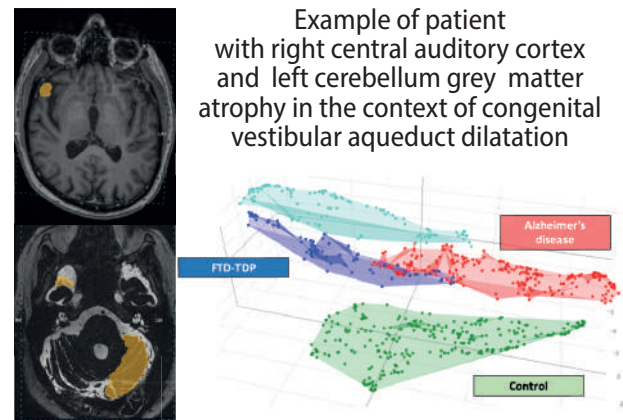
### Meniere's disease



### VHIT Clinical Decision Support



### BrainGML®



“

“Through its innovative analysis solutions, GeodAlsics empowers otoneurologists to interpret electrophysiological tests and inner ear-imaging with greater precision and efficiency. By leveraging paraclinical data, GeodAlsics enables precise diagnoses, paving the way for the exploration and validation of new physiopathological hypotheses. These advanced analytical insights help clinicians optimize the management of cochleovestibular pathologies. Delivering high performance while remaining eco-friendly and cost-effective, GeodAlsics software transforms clinical practice.”

**Charlotte Hautefort, MD, otologist - Lariboisiere Hospital - Clinical Head of IHU Reconnect**

## Main advantages of our Technology

- Use standard raw data
- Greentech
- Adaptable solutions
- Non-supervised AI
- Explainability
- SaaS or on-site applications



**GeodAlsics**

@ contact@geodaisics.com

www.geodaisics.com

+33 622 382 048

www.linkedin.com/company/geodaisics

BIOPOLIS - 5 avenue du Grand Sablon, 38700, La Tronche, France

